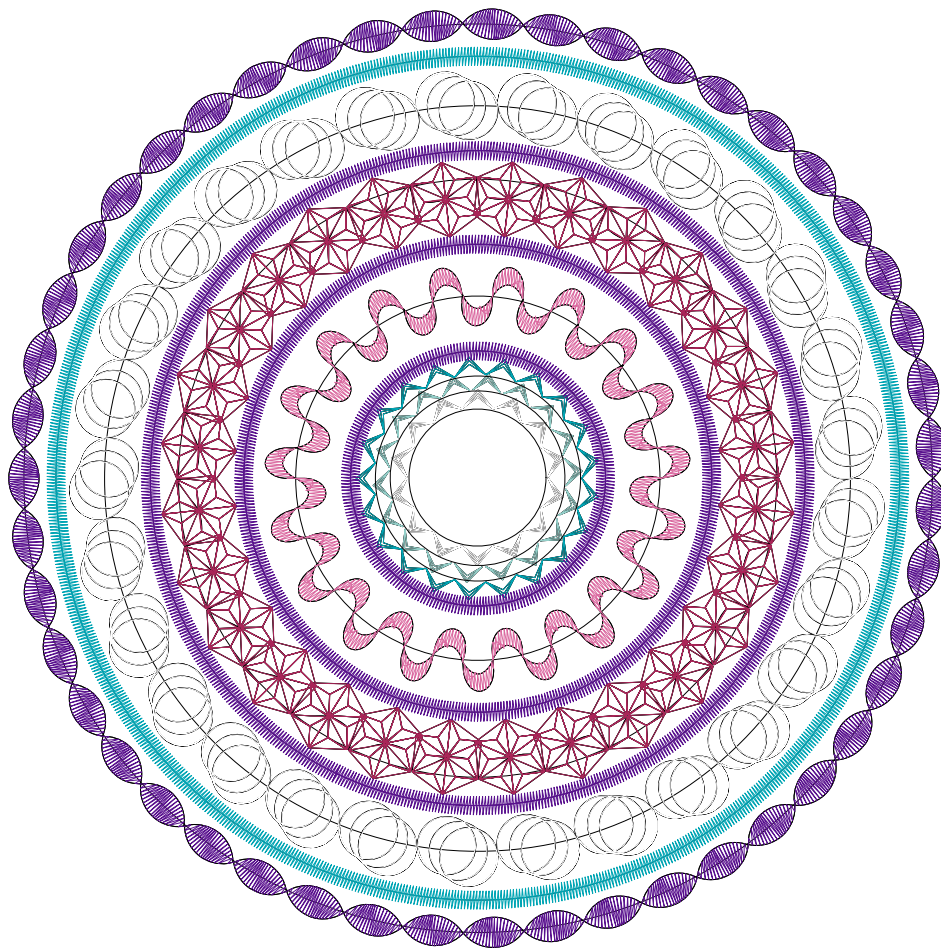


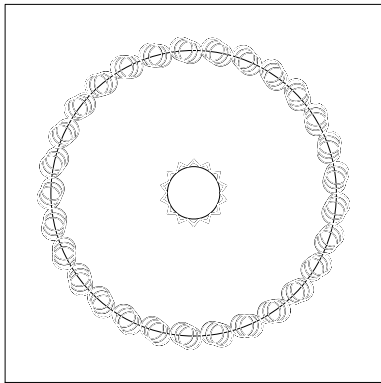
Stickmuster:KK1006-Mandala
6.EMB

Höhe: 124.1 mm
 Breite: 124.0 mm
 Stiche: 12.193
 Farben: 6
 Farbwechsel: 5
 Fadenschnitte: 11
 Maschinenformat: Janome
 Rahmen: W6 Rahmen groß
 Stoffart: Reine Baumwolle
 Benötigte Stabilisierung: Deckschicht:
 Stickvlies: Abreißbar x 2
 Spulen-Fadenverbrauch: 22.37m

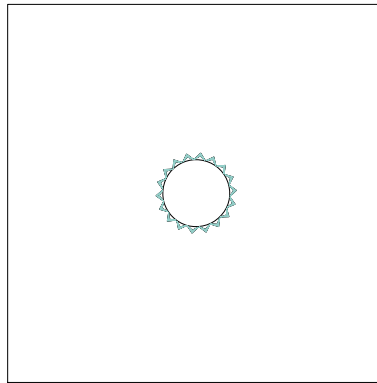
Farbreihenfolge:

#	Farbe	Element	Code	Name	Tabelle
1.	9		209	White	Hatch
2.	33		4952	Mystic Blue	Isacord 40
3.	32		4101	Wave Blue	Isacord 40
4.	27		2532	Pretty in Pink	Isacord 40
5.	34		2521	Fuschia	Isacord 40
6.	12		212	Purple	Hatch

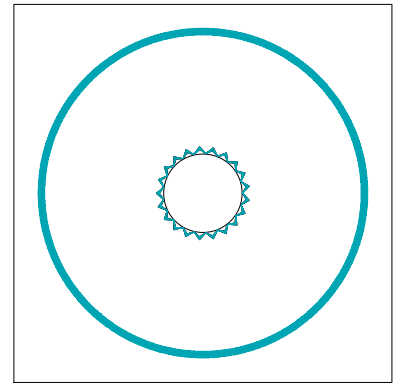




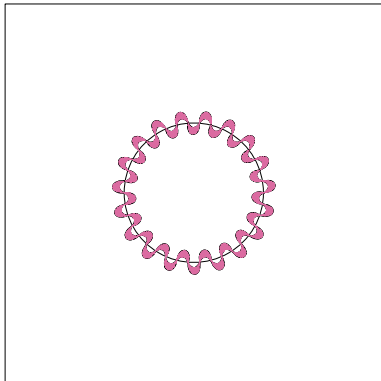
Stopp #: 1
 Element:
 Code: 209
 Name : White
 Tabelle: Hatch
 Stiche: 1.968
 Verwendeter Faden: 7.71m



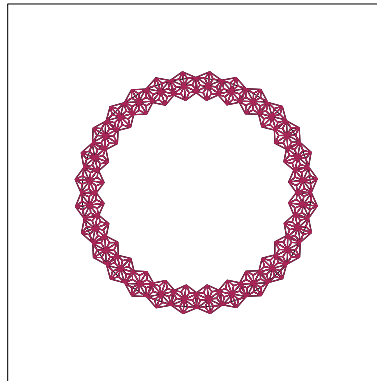
Stopp #: 2
 Element:
 Code: 4952
 Name : Mystic Blue
 Tabelle: Isacord 40
 Stiche: 135
 Verwendeter Faden: 0.67m



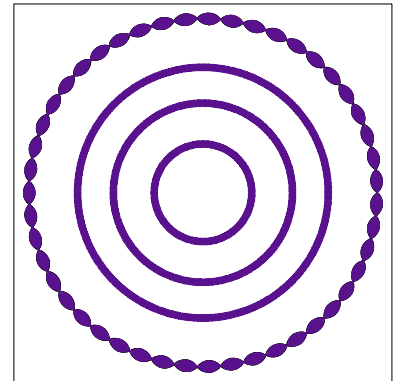
Stopp #: 3
 Element:
 Code: 4101
 Name : Wave Blue
 Tabelle: Isacord 40
 Stiche: 2.063
 Verwendeter Faden: 10.77m



Stopp #: 4
 Element:
 Code: 2532
 Name : Pretty in Pink
 Tabelle: Isacord 40
 Stiche: 1.138
 Verwendeter Faden: 4.98m



Stopp #: 5
 Element:
 Code: 2521
 Name : Fuschia
 Tabelle: Isacord 40
 Stiche: 1.916
 Verwendeter Faden: 10.52m



Stopp #: 6
 Element:
 Code: 212
 Name : Purple
 Tabelle: Hatch
 Stiche: 4.973
 Verwendeter Faden: 27.49m