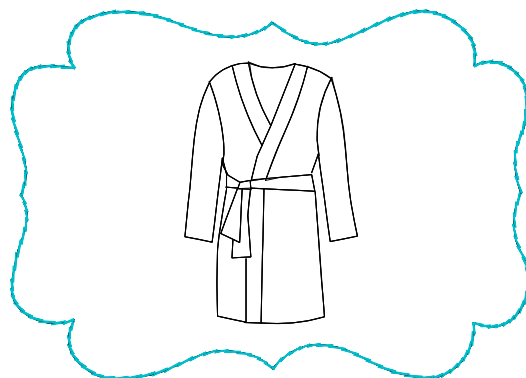
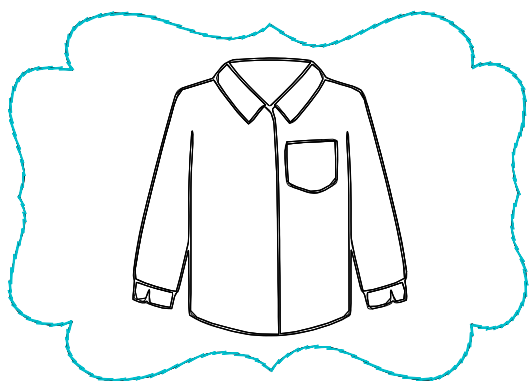


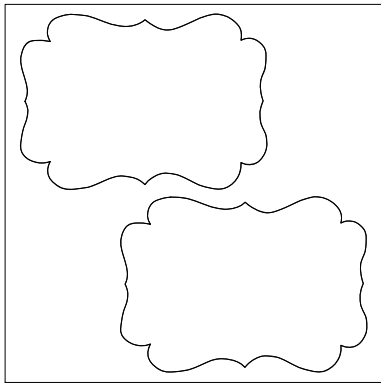
Stickmuster:KK1052 Pin it Kleidung  
10.EMB

Höhe: 99.7 mm  
 Breite: 96.5 mm  
 Stiche: 2.632  
 Farben: 3  
 Farbwechsel: 3  
 Fadenschnitte: 11  
 Maschinenformat: Janome  
 Rahmen: 10x10  
 Stoffart: Reine Baumwolle  
 Benötigte Stabilisierung: Deckschicht:  
 Stickvlies: Abreißbar x 2  
 Spulen-Fadenverbrauch: 3.60m

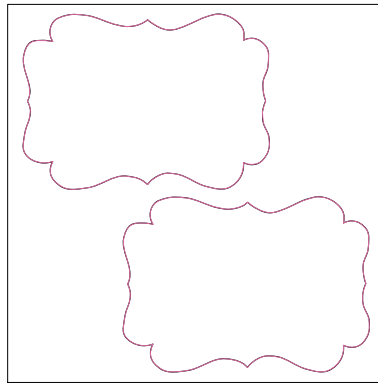
## Farbreihenfolge:

#	Farbe	Element	Code	Name	Tabelle
1.	11		0020	Black	Hatch Default
2.	2		2532	Pretty in Pink	Isacord 40
3.	11		0020	Black	Hatch Default
4.	12		4010	Caribbean Blue	Hatch Default

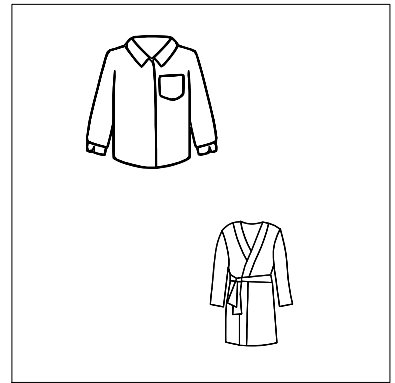




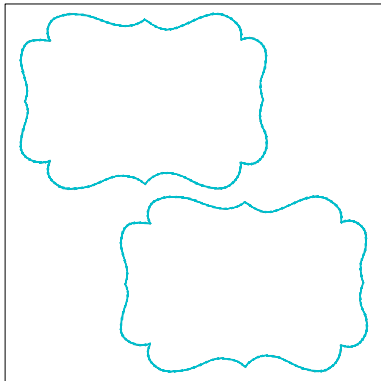
Stopp #: 1  
 Element:  
 Code: 0020  
 Name : Black  
 Tabelle: Hatch Default  
 Stiche: 314  
 Verwendeter Faden: 1.29m



Stopp #: 2  
 Element:  
 Code: 2532  
 Name : Pretty in Pink  
 Tabelle: Isacord 40  
 Stiche: 317  
 Verwendeter Faden: 1.28m



Stopp #: 3  
 Element:  
 Code: 0020  
 Name : Black  
 Tabelle: Hatch Default  
 Stiche: 1.035  
 Verwendeter Faden: 4.61m



Stopp #: 4  
 Element:  
 Code: 4010  
 Name : Caribbean Blue  
 Tabelle: Hatch Default  
 Stiche: 966  
 Verwendeter Faden: 4.17m